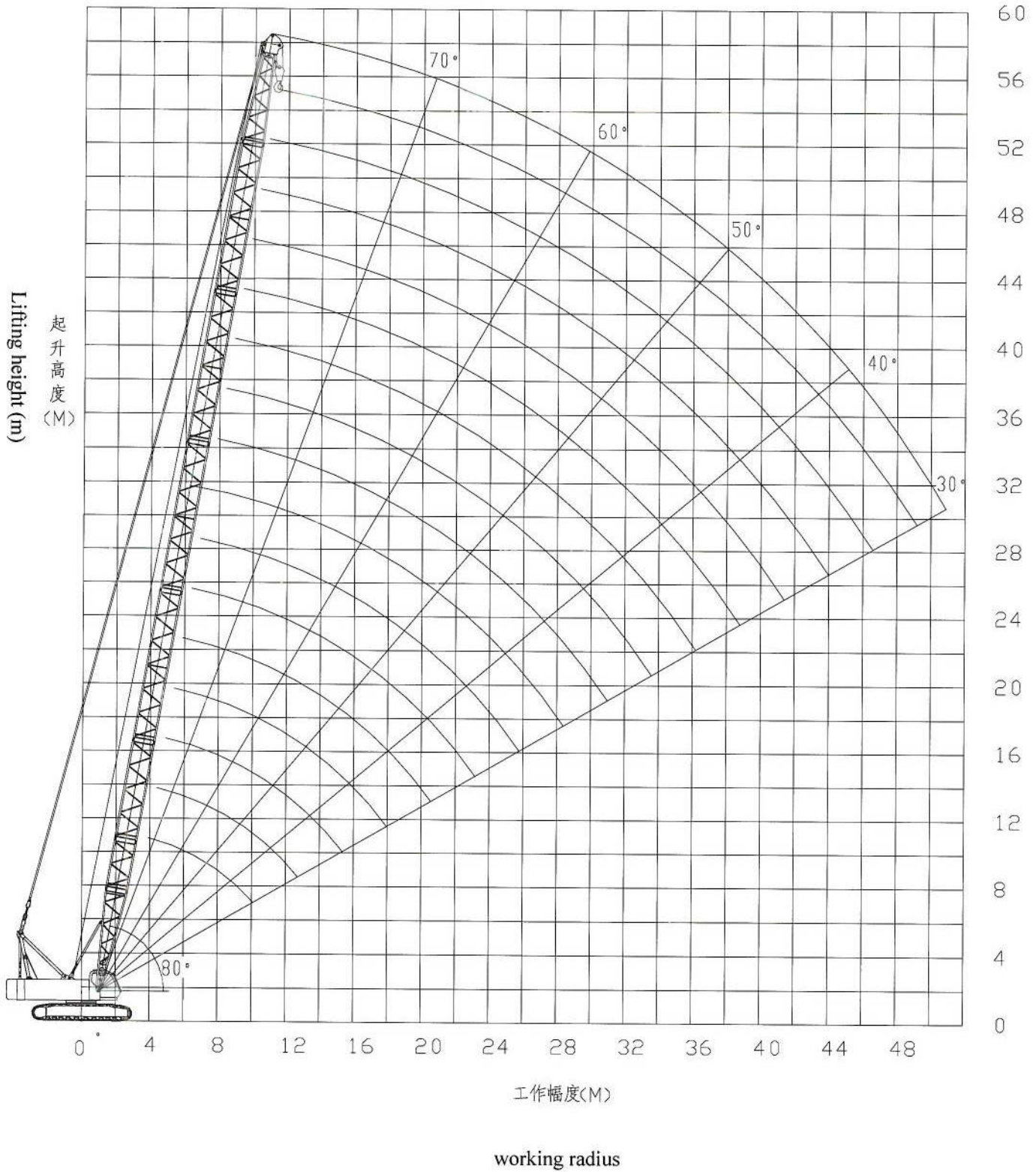




4. Lifting performance

4.1 Boom lifting characteristics

Boom lifting height characteristics curve



2.2 Rated lifting Capacity Table

! **EXPLANATION :** The unit in lifting capacity table is sh ton , the sign of “*/*” indicates “lifting load/radius”.

2.2.1 Lifting Capacity Table of Boom

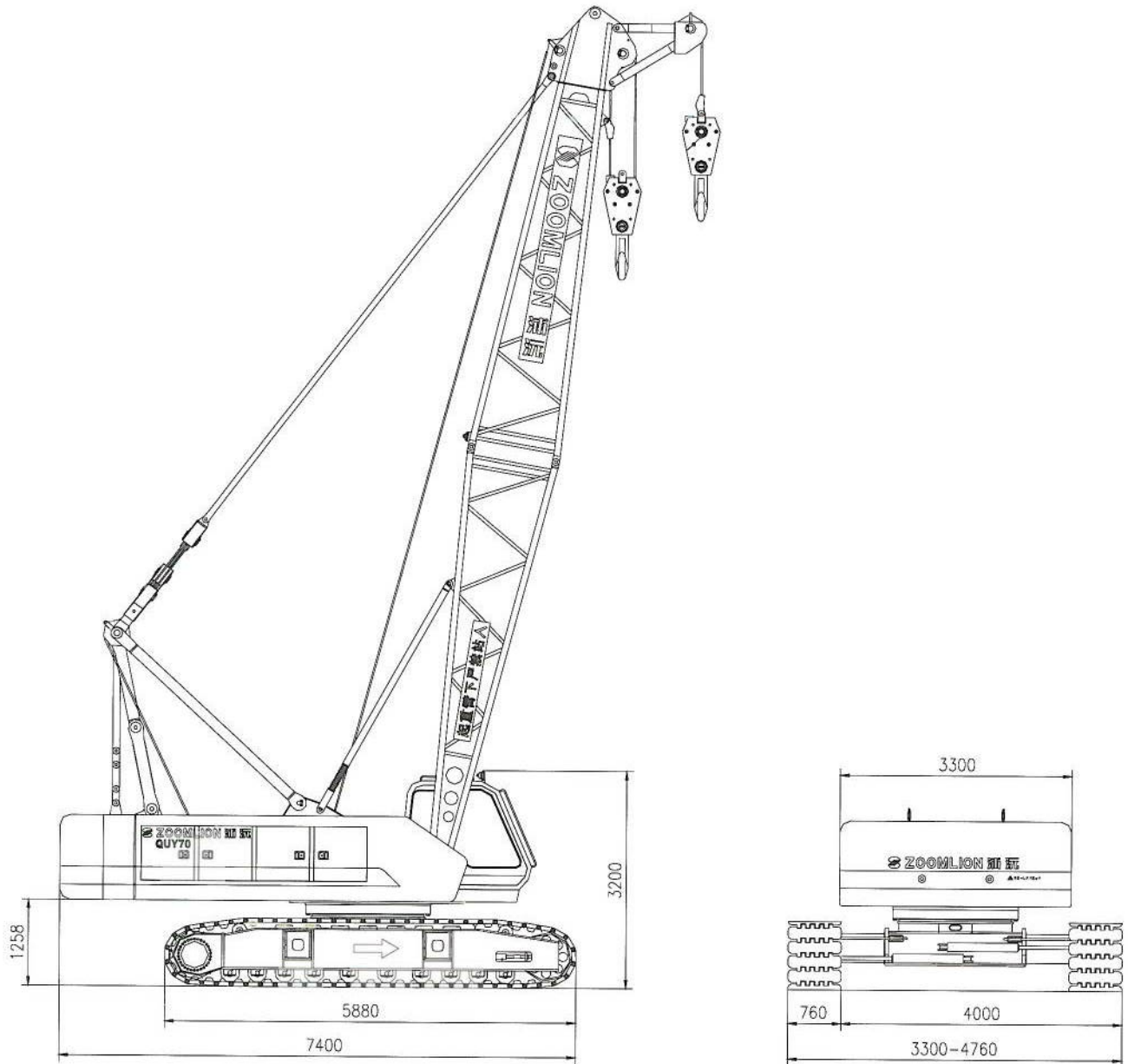
Unit: t

		Boom length (m)										
Radius (m)	12	15	18	21	24	27	30	33	36	39	Radius (m)	
3.8	70										3.8	
4	65	65	58.2/4.1	51.2/4.6							4	
5	53.6	52.3	51	49.8	44.2/5.2	37/5.7					5	
6	40.5	40.1	39.3	38.5	37.7	36.9	34/6.2	30.4/6.7			6	
7	32.1	32	31.8	31.2	30.6	30.1	29.5	28.9	27.1/7.3	24.3/7.8	7	
8	26.6	26.5	26.4	26.2	25.8	25.3	24.8	24.3	23.9	23.4	8	
9	22.6	22.5	22.4	22.3	22.2	21.8	21.4	21	20.6	20.2	9	
10	19.7	19.5	19.4	19.3	19.2	19.1	18.7	18.4	18	17.7	10	
12		15.4	15.3	15.1	15	14.9	14.8	14.6	14.3	14	12	
14		12.6	12.5	12.4	12.2	12.1	12	11.9	11.7	11.5	14	
16			10.5	10.4	10.2	10.1	10	9.9	9.8	9.6	16	
19				8.3	8.1	8	7.9	7.8	7.6	7.5	19	
20					7.6	7.5	7.3	7.2	7.1	7	20	
22					6.7	6.5	6.4	6.3	6.2	6	22	
24						5.8	5.7	5.5	5.4	5.3	24	
26							5	4.9	4.8	4.6	26	
28								4.4	4.2	4.1	28	
29								4.1	4	3.9	29	
30									3.8	3.6	30	
32									3.4	3.2	32	
34										2.9	34	



1. Overall dimensions and weight

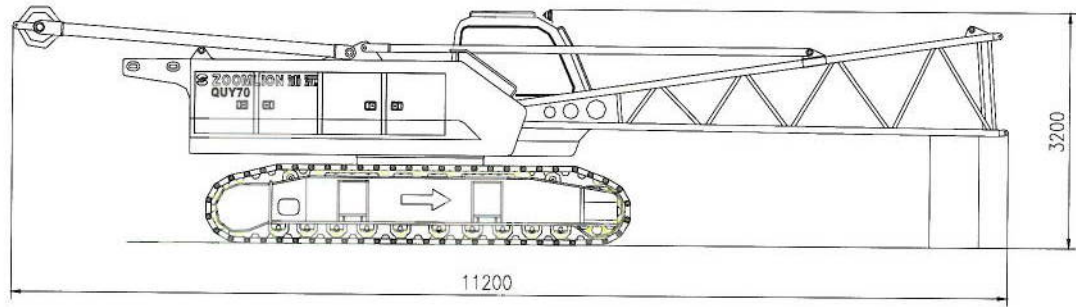
1.1 Main machine overall dimensions



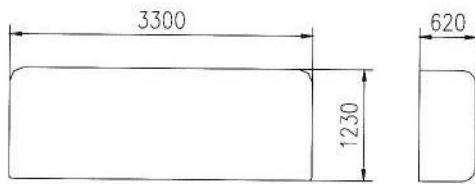
- Max. lifting capacity: 70t
- Working weight with basic boom: 50t
- Boom length: 12~57m
- Max length of boom +. fixed jib: 42+18m



1.2 . Main transportation parts overall dimensions and weight
Main machine transportation weight 3.95t



Counterweight I: 10t



Counterweight II: 10t

