

**Technical data**  
**Hydraulic lift crane**

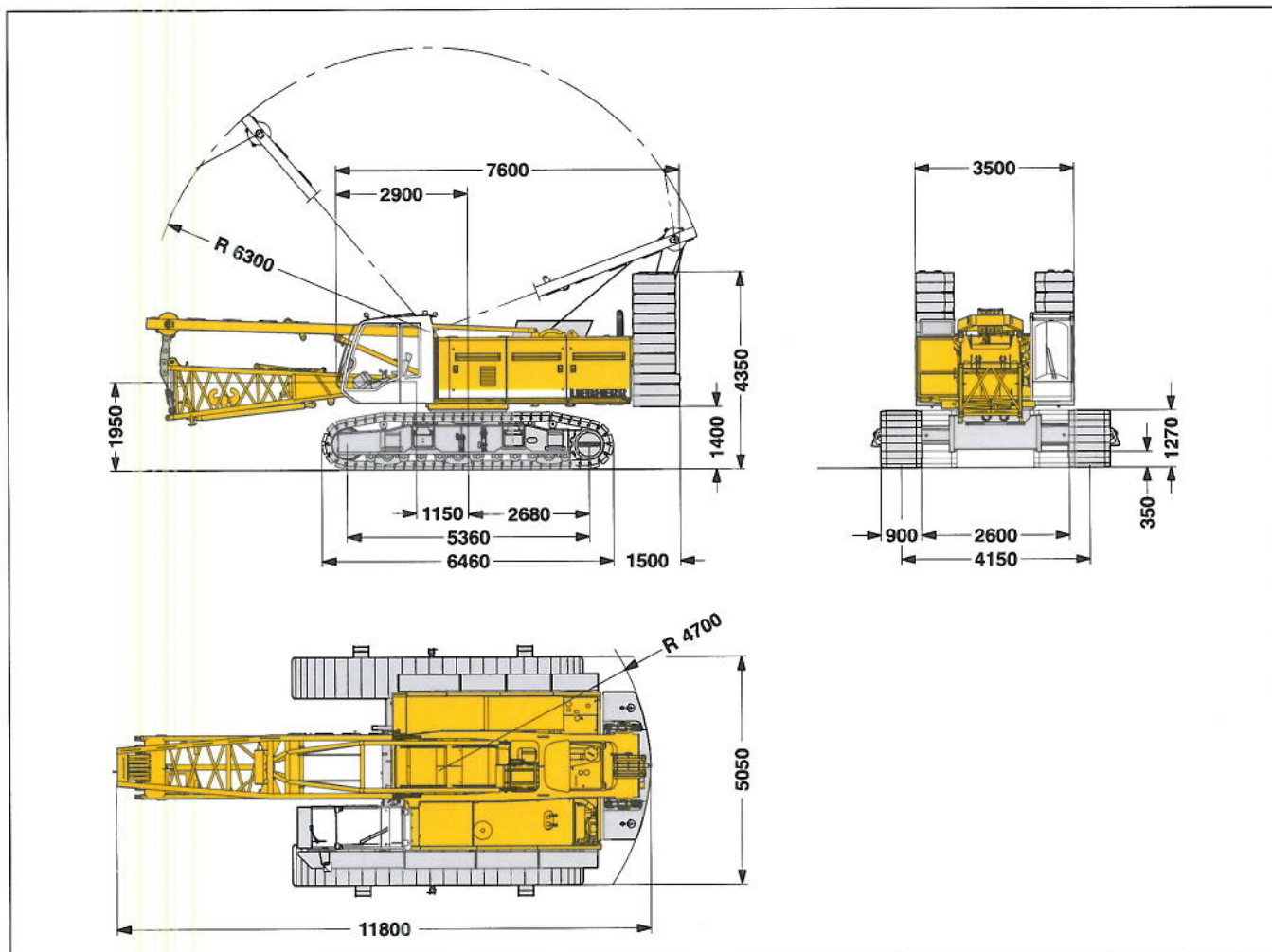
**LR 1100**  
Litronic®



**LIEBHERR**

# Dimensions

## Basic machine with undercarriage



### Operating weight

The operating weight includes the basic machine with crawlers, 2 main winches 120 kN and 14 m main boom, consisting of A-frame, boom foot (5.5 m), boom head (8.5 m), 32.3 t basic counterweight, 15 t carbody counterweight and 140 t hook block.

Total weight ————— appr. 109.8 t

### Ground pressure

Ground bearing pressure ————— 1.14 kg/cm<sup>2</sup>

### Equipment

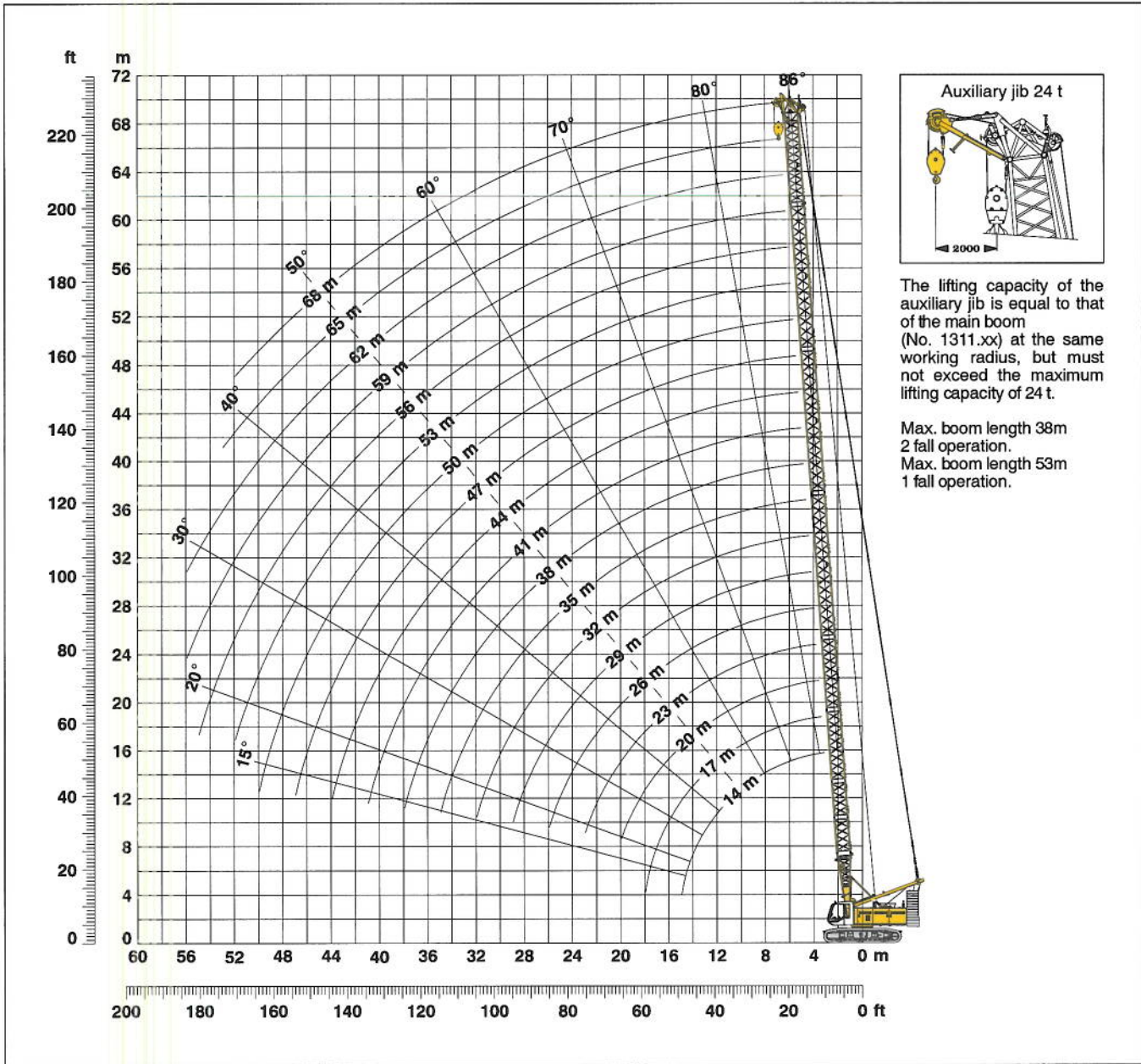
Main boom (No. 1311.xx) max. length ————— 68 m  
 High reach (1311.xx and 1008.xx) ————— 83 m  
 Luffing jib (No. 1008.xx) max. length ————— 62 m  
 Max. combination ————— boom 38 m and luffing jib 62 m  
 Fixed jib (No. 0806.xx) ————— 11 m – 32 m  
 Auxiliary jib 24 t lifting capacity (option 36 t)

### Remarks

1. The lifting capacities stated are valid for lifting operation only (corresponds with crane classification according to F.E.M. 1.001, crane group A1)
2. Crane standing on firm, horizontal ground.
3. The weight of the lifting device (hoisting ropes, hook block, shackle etc.) must be deducted from the gross lifting capacity to obtain a net lifting value.
4. Additional equipment on boom (e.g. boom walkways, auxiliary jib) must be deducted to get the net lifting capacity.
5. For max. wind speed please refer to lift chart in operator's cab or manual.
6. Working radii are measured from centre of swing and under load.
7. The lifting capacities are valid for 360 degrees of swing.
8. Calculation of stability under load is based on DIN 15019 / part 2 / chart 1 and ISO 4305 Table 1 + 2, tipping angle 4°.
9. The structures are calculated according to F.E.M. 1.001 – 1998 (prEN 13001 / T2 / 1997).

# Working range - main boom (No. 1311.xx) 86° - 15°

## 32.3 t counterweight and 15 t carbody counterweight



### Main boom configuration (Table 1 - No. 1311.xx)

Configuration for boom lengths (17 m - 80 m)

	Length	Amount of boom extensions																		
Boom foot	5.5 m	1	1	1	1	1	1	1	1	1	1	1	1	1	1	1	1	1	1	1
Boom insert	3.0 m		1		1		1		1		1		1		1		1		1	
Boom insert	6.0 m			1	1	2	2	1	1	2	2	1	1	2	2	1	1	2	2	2
Boom insert	12.0 m							1	1	1	1	2	2	2	2	3	3	3	3	3
Boom head	8.5 m	1	1	1	1	1	1	1	1	1	1	1	1	1	1	1	1	1	1	1
Boom length (m)		14	17	20	23	26	29	32	35	38	41	44	47	50	53	56	59	62	65	68

# Lift chart for main boom (No. 1311.xx)

Capacities in metric tons for boom lengths (14 m – 68 m) – with 120 kN winches  
32.3 t counterweight and 15 t carbody counterweight

Radius (m)	Boom length in (m)										Radius (m)	
	14	20	26	32	38	44	50	56	62	68		
3.1	104.5											3.1
4	103.7	94.1	78.0									4
5	82.2	73.2	65.8	59.8	50.5							5
6	65.8	59.7	54.6	50.2	46.4	35.2	27.7					6
7	54.8	50.3	46.5	43.2	40.2	34.3	26.9	18.6	15.2	10.9		7
8	46.8	43.4	40.4	37.8	35.3	33.1	26.2	18.2	14.9	10.8		8
9	39.5	38.1	35.6	33.5	31.5	29.7	25.2	17.9	14.6	10.5		9
10	34.1	33.9	31.8	30.0	28.3	26.8	24.5	17.5	14.2	10.2		10
12	26.6	26.7	26.1	24.8	23.4	22.3	21.1	16.9	13.5	9.7		12
14	21.6	21.7	21.6	20.9	19.9	18.9	17.9	15.9	13.0	9.3		14
16		18.1	18.0	18.0	17.1	16.3	15.5	14.7	12.1	8.9		16
18		15.5	15.4	15.3	15.0	14.3	13.5	12.8	10.9	8.4		18
20		13.3	13.3	13.2	13.0	12.6	12.0	11.4	10.6	8.1		20
22			11.7	11.6	11.4	11.2	10.6	10.1	9.5	7.8		22
24			10.3	10.3	10.1	9.9	9.5	9.0	8.4	7.3		24
26			9.1	9.1	8.9	8.8	8.5	8.0	7.5	6.9		26
28				8.2	8.0	7.8	7.6	7.2	6.7	6.2		28
30				7.3	7.1	7.0	6.7	6.5	6.0	5.5		30
32				6.6	6.4	6.3	6.0	5.8	5.4	4.9		32
34					5.8	5.6	5.4	5.2	4.8	4.4		34
36					5.2	5.1	4.8	4.7	4.3	3.9		36
38					4.7	4.6	4.4	4.2	3.9	3.4		38
40						4.1	3.9	3.7	3.5	3.0		40
42						3.7	3.5	3.3	3.1	2.7		42
44						3.3	3.1	3.0	2.7	2.3		44
46							2.8	2.6	2.4	2.0		46
48							2.5	2.3	2.1			48
50							2.2	2.0				50

Above lift chart is for reference only. For actual lift duty please refer to lift chart in operator's cab or manual.